



AO 25 Inter Agency Task Force

# **FY 2016 PBB Guidelines Orientation for PBB Focal Persons**

**Aguinaldo Theater, De Jesus Avenue, Camp Aguinaldo,  
Quezon City  
December 9, 2016**



AO 25 Inter Agency Task Force

## **FY 2016 Guidelines for Ranking of Delivery Units**

### **Item 8.1**

**Departments/Agencies and their corresponding offices/  
delivery units that meet the criteria and conditions in  
Section 4.1 are eligible to the FY 2016 PBB.**

<b>Ranking</b>	<b>Performance Category</b>
<b>Top 10%</b>	<b>Best Bureau/Office/Delivery Unit</b>
<b>Next 25%</b>	<b>Better Bureau/Office/Delivery Unit</b>
<b>Next 65%</b>	<b>Good Bureau/Office/Delivery Unit</b>



## FY 2016 Rates of the FY 2016 PBB

### Item 9.0 of MC No. 2016-1

The PBB rates of individual employees shall depend on the performance ranking of the bureau or [delivery unit](#) where they belong, based on the individual's monthly basic salary as of December 31, 2016, but not lower than P 5,000.

Performance Category	PBB as % of Monthly Basic Salary
Best Bureau/Office/Delivery Unit	65%
Better Bureau/Office/Delivery Unit	57.5%
Good Bureau/Office/Delivery Unit	50%



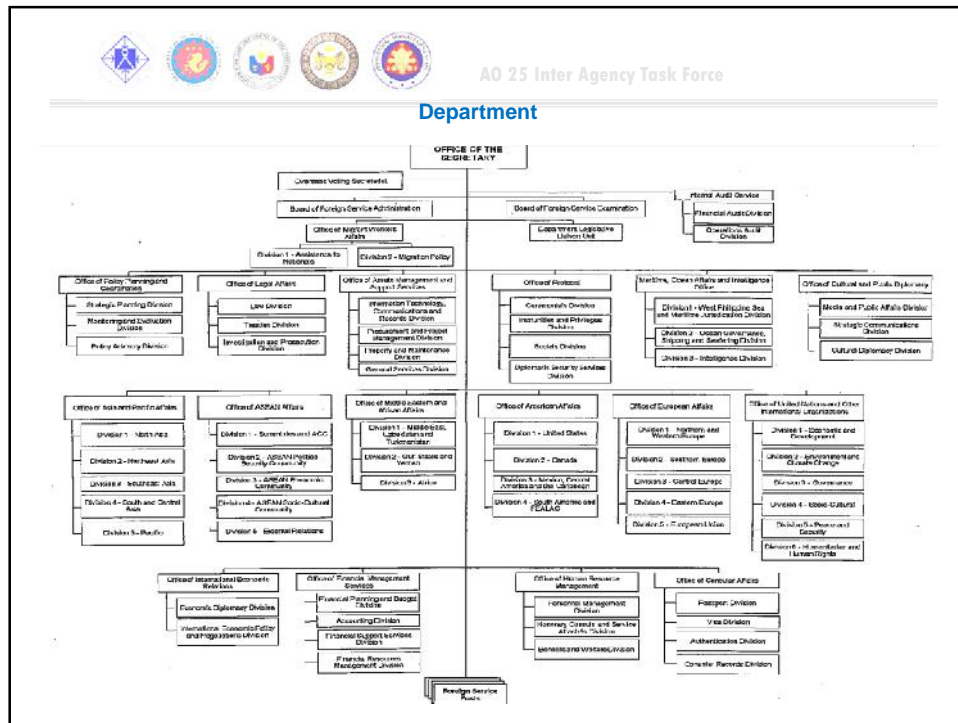
## Delivery Unit

Department Level	Intermediate Level	Bureau Level
Service Bureau Office Regional Office	Service Bureau Office Field Office	Division



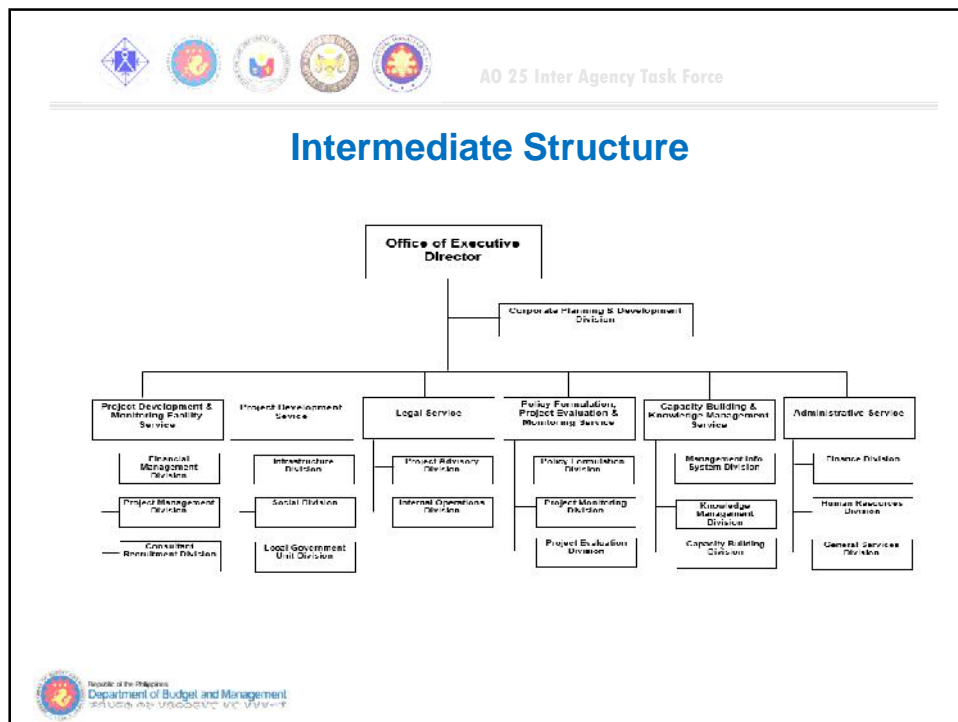
## AO 25 Inter Agency Task Force

### Department



## AO 25 Inter Agency Task Force

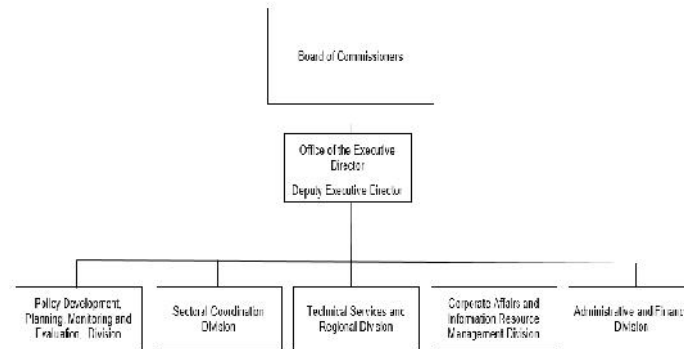
### Intermediate Structure





AO 25 Inter Agency Task Force

## Commission



AO 25 Inter Agency Task Force

# THANK YOU!